

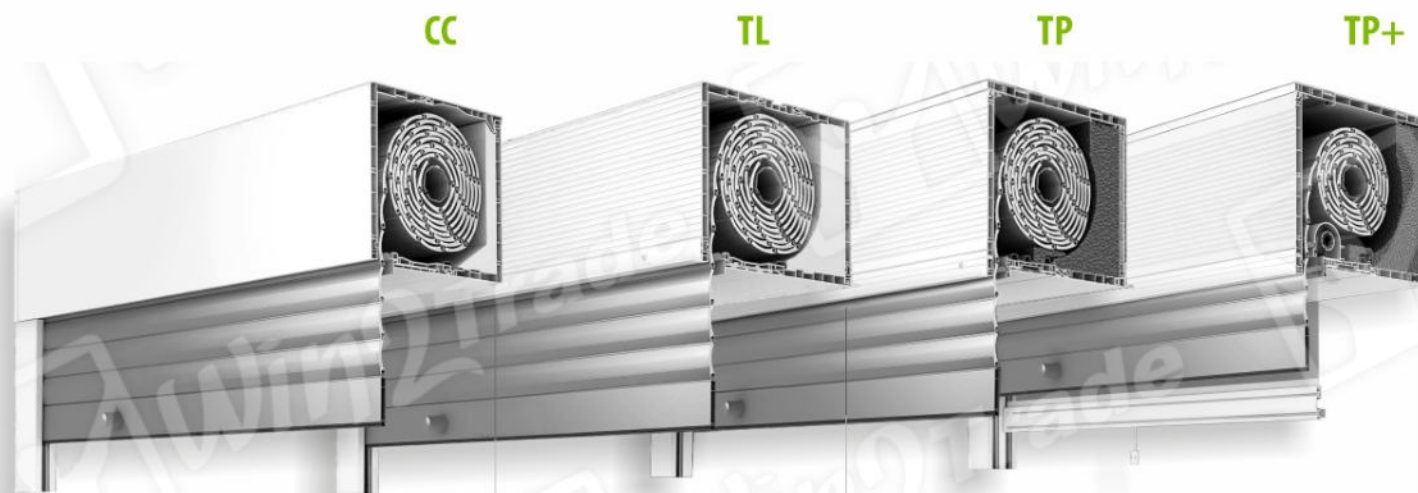


## Top-mounted Roller Shutters CC / TL / TP / TP+

### Top-mounted Roller Shutters

Top-mounted roller shutters are mounted directly on the window frame. The roller shutter box is placed on top of the window or door frame. Service access to the box is always from the inside of the room.

The roller shutter can be controlled (raising/lowering) manually – using a tape or Kardan crank or electrically – using switches or a remote controller. The colour of the aluminum profile (PA) and shutter box can be selected from a wide colour range.



**CC**

Box:

162 x 135/140 mm  
186 x 160/166 mm  
228 x 200/206 mm

**TL**

Box:

253 x 161/165 mm  
253 x 200/203 mm

**TP / TP+**

Box:

255 x 192/180 mm  
255 x 232/220 mm  
255 x 262/250 mm

# Top-mounted Roller Shutters Aluminum profile (PA)

CC / TL / TP / TP+

## Aluminum profile (PA)

A crucial element of every roller shutter is the aluminum profile (PA).

The profiles are made of rolled aluminum sheet and then powder-coated.

Each profile is filled with CFC-free, polyurethane foam. This ensures excellent acoustic and thermal insulation.

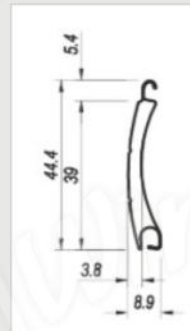
The choice of aluminum profile (PA) depends on the planned width of the roller shutter.



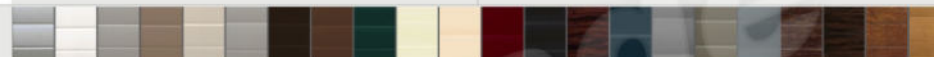
Perforated aluminum profile (PA) allows for ventilation of the room when the roller shutter is closed while also providing light into the interior.

### PA 39

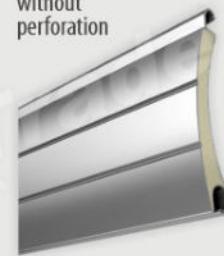
maximum roller shutter width:  
2500 mm



Available colours



without perforation



perforated

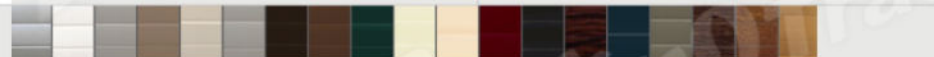


### PA 45

maximum roller shutter width:  
3000 mm



Available colours



without perforation

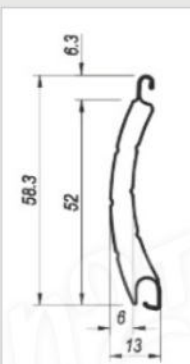


perforated



### PA 52

maximum roller shutter width:  
3700 mm



Available colours



without perforation



perforated



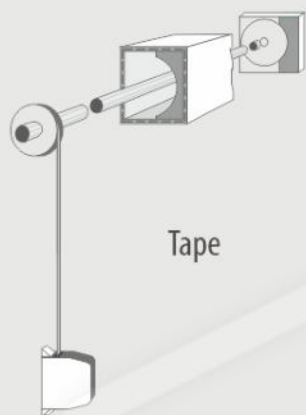
Top-mounted Roller Shutters

# Roller shutter control

CC / TL / TP / TP+



MANUAL DRIVE



ELECTRIC DRIVE



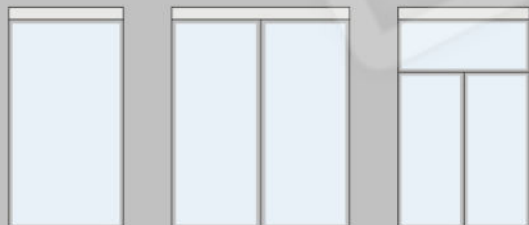
# Top-mounted Roller Shutters

## Classic CC-1000

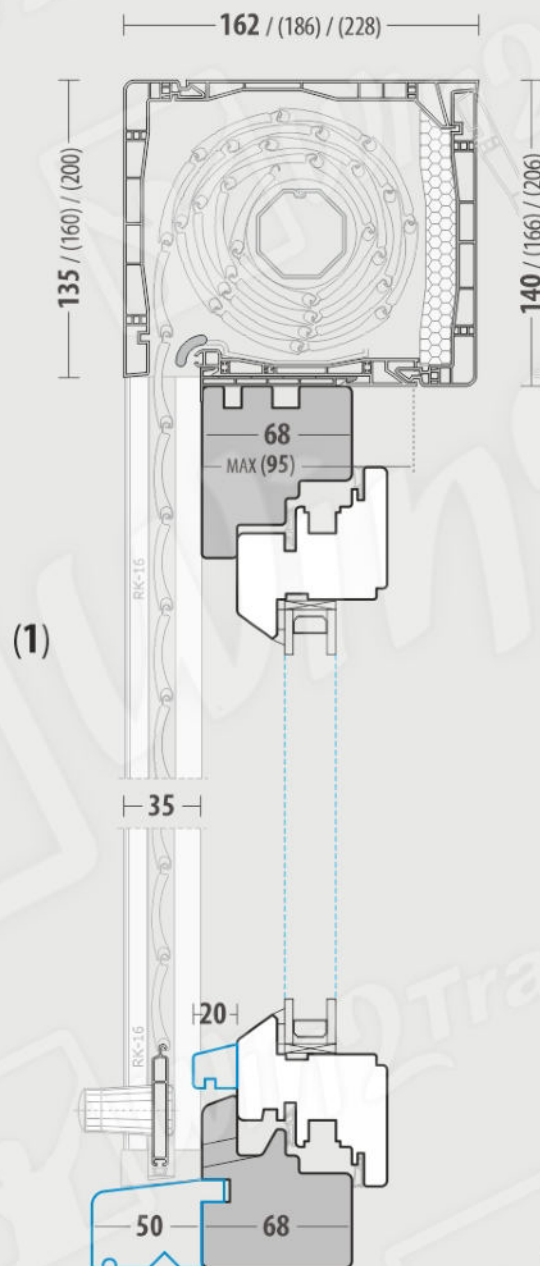
Basic cross-section ( Guiderail RK-16 )



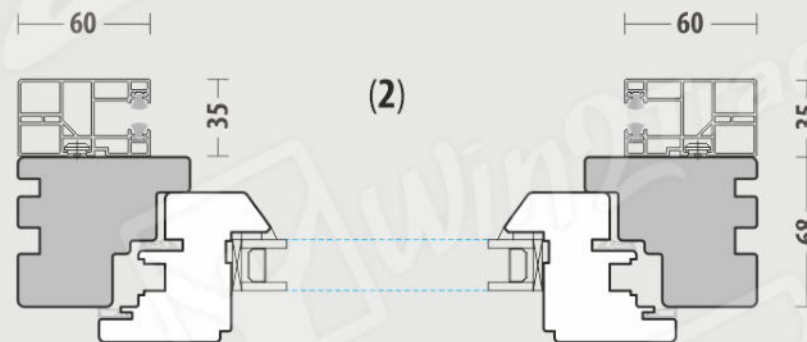
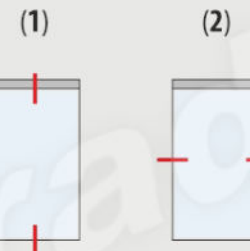
CC-1000



CC-1000



Guiderail  
RK-16



Inspection hatch



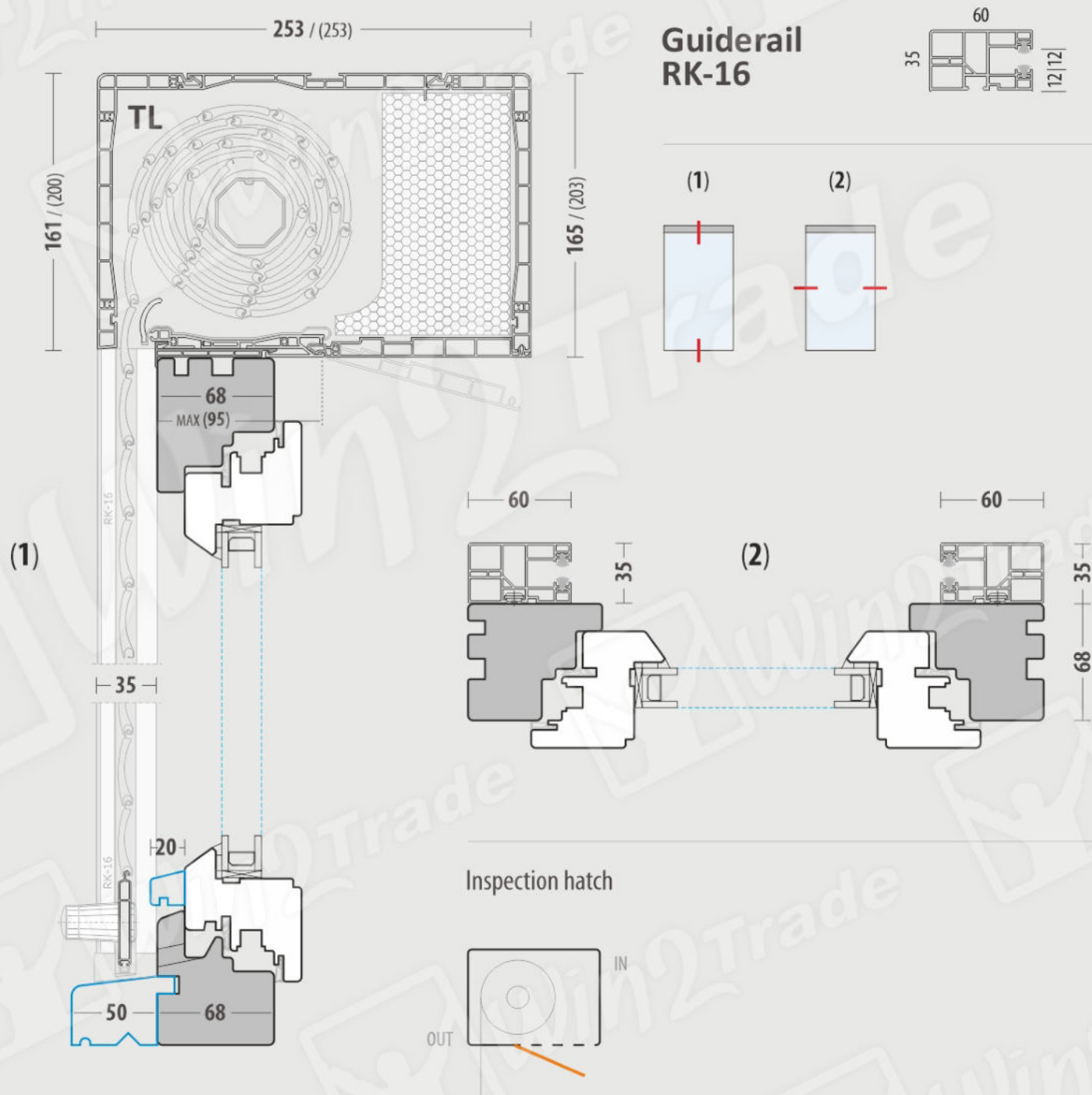
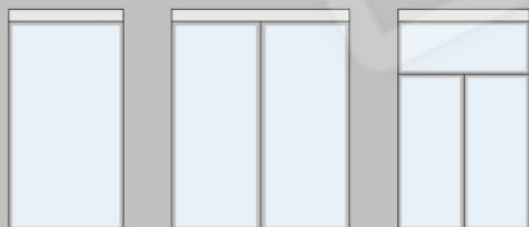
# Top-mounted Roller Shutters

## TL / Thermo Lux /

Basic cross-section ( Guiderail RK-16 )



TL



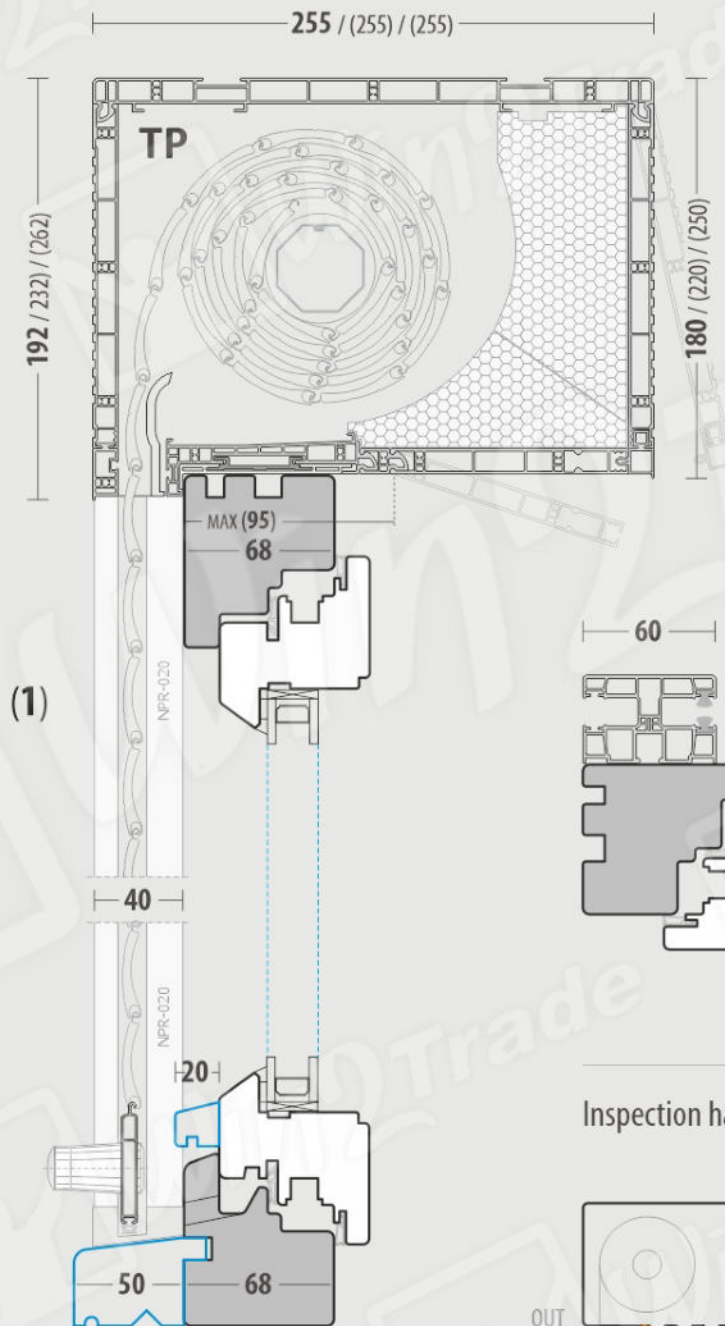
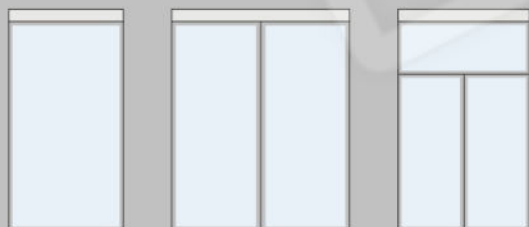
# Top-mounted Roller Shutters

## TP / Thermo Prestige /

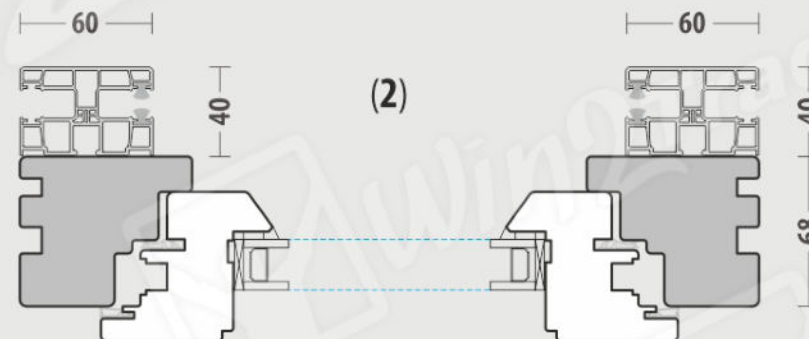
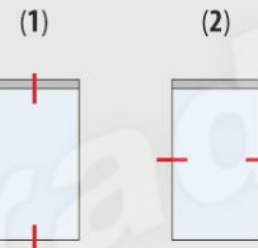
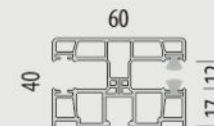
Basic cross-section ( Guiderail NPR-020 )



TP



### Guiderail NPR-020



### Inspection hatch

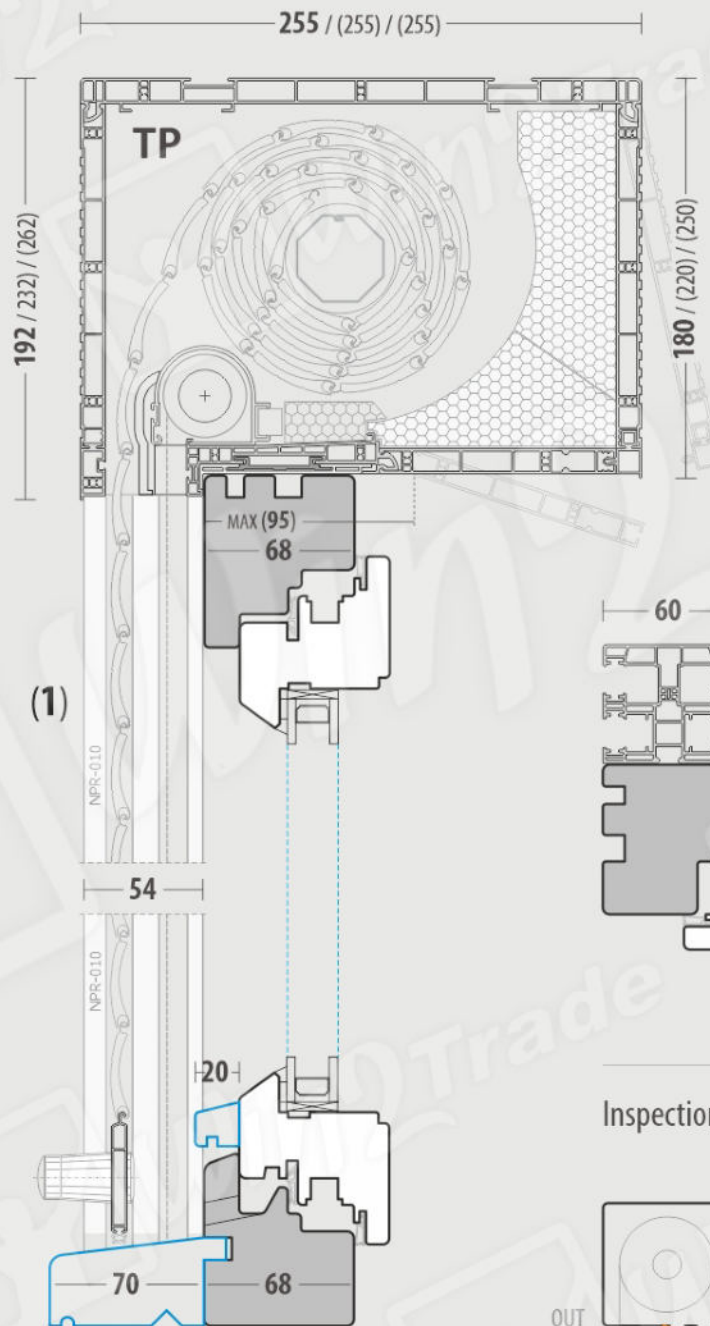
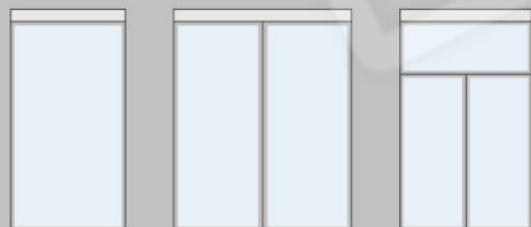


# Top-mounted Roller Shutters

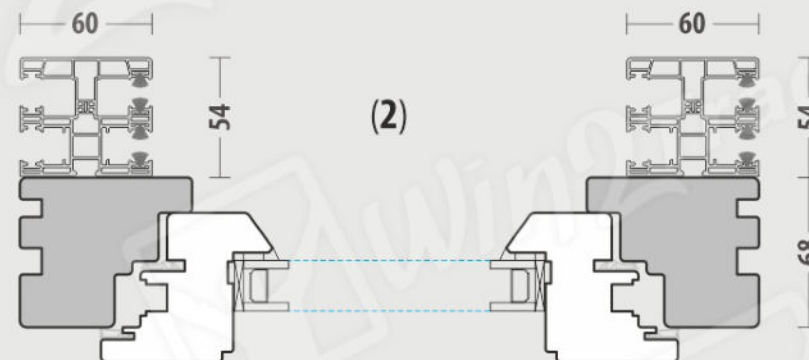
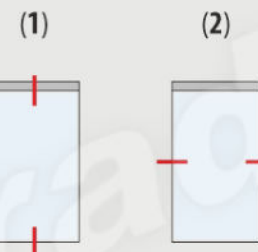
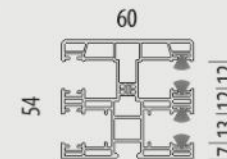
**TP+** / Thermo Prestige/  
with a mosquito net ( Guiderail NPR-010 )



TP+



## Guiderail NPR-010



### Inspection hatch

